

**P5F1B Antibody (C-term)**  
**Affinity Purified Rabbit Polyclonal Antibody (Pab)**  
**Catalog # AP10822b**

**Specification**

---

**P5F1B Antibody (C-term) - Product Information**

Application	WB, FC,E
Primary Accession	<a href="#">Q06416</a>
Other Accession	<a href="#">Q9TSV5</a> , <a href="#">P20263</a> , <a href="#">Q01860</a> , <a href="#">Q97552</a> , <a href="#">NP_001153014.1</a>
Reactivity	Human
Predicted	Bovine, Mouse, Pig
Host	Rabbit
Clonality	Polyclonal
Isotype	Rabbit IgG
Calculated MW	38588
Antigen Region	214-242

**P5F1B Antibody (C-term) - Additional Information**

**Gene ID** 5462

**Other Names**

Putative POU domain, class 5, transcription factor 1B, Oct4-pg1, Octamer-binding protein 3-like, Octamer-binding transcription factor 3-like, POU5F1B

**Target/Specificity**

This P5F1B antibody is generated from rabbits immunized with a KLH conjugated synthetic peptide between 214-242 amino acids from the C-terminal region of human P5F1B.

**Dilution**

WB~~1:1000  
FC~~1:10~50  
E~~Use at an assay dependent concentration.

**Format**

Purified polyclonal antibody supplied in PBS with 0.09% (W/V) sodium azide. This antibody is purified through a protein A column, followed by peptide affinity purification.

**Storage**

Maintain refrigerated at 2-8°C for up to 2 weeks. For long term storage store at -20°C in small aliquots to prevent freeze-thaw cycles.

**Precautions**

P5F1B Antibody (C-term) is for research use only and not for use in diagnostic or therapeutic procedures.

**P5F1B Antibody (C-term) - Protein Information**

**Name** POU5F1B

**Function** Shows weak transcriptional activator activity.

**Cellular Location**

Nucleus {ECO:0000255|PROSITE-ProRule:PRU00108, ECO:0000255|PROSITE-ProRule:PRU00530, ECO:0000269|PubMed:18949397} Cytoplasm

**Tissue Location**

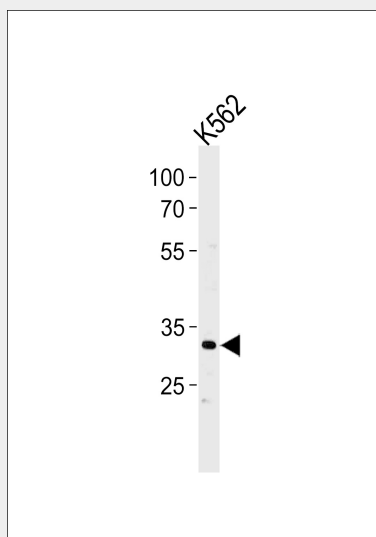
Detected in epithelial cells of the prostate (at protein level) (PubMed:20017164). Detected at the mRNA level in several cancer tissues (breast, uterine cervix, lung, thyroid gland, esophagus, colon, urinary bladder, and glioma) (PubMed:16229821, PubMed:21341266)

**P5F1B Antibody (C-term) - Protocols**

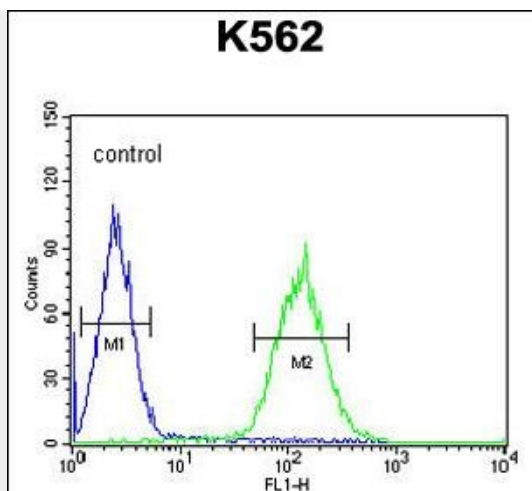
Provided below are standard protocols that you may find useful for product applications.

- [Western Blot](#)
- [Blocking Peptides](#)
- [Dot Blot](#)
- [Immunohistochemistry](#)
- [Immunofluorescence](#)
- [Immunoprecipitation](#)
- [Flow Cytometry](#)
- [Cell Culture](#)

**P5F1B Antibody (C-term) - Images**



P5F1B Antibody (C-term) (Cat. #AP10822b) western blot analysis in K562 cell line lysates (35ug/lane). This demonstrates the P5F1B antibody detected the P5F1B protein (arrow).



P5F1B Antibody (C-term) (Cat. #AP10822b) flow cytometric analysis of K562 cells (right histogram) compared to a negative control cell (left histogram). FITC-conjugated goat-anti-rabbit secondary antibodies were used for the analysis.

#### **P5F1B Antibody (C-term) - Background**

This intronless gene was thought to be a transcribed pseudogene of POU class 5 homeobox 1, however, it has been reported that this gene can encode a functional protein. The encoded protein is nearly the same length as and highly similar to the POU class 5 homeobox 1 transcription factor, has been shown to be a weak transcriptional activator and may play a role in carcinogenesis and eye development.

#### **P5F1B Antibody (C-term) - References**

Kastler, S., et al. Prostate 70(6):666-674(2010)  
White, K.L., et al. Twin Res Hum Genet 13(1):43-56(2010)  
Crowther-Swanepoel, D., et al. Nat. Genet. 42(2):132-136(2010)  
Gudmundsson, J., et al. Nat. Genet. 41(10):1122-1126(2009)  
Panagopoulos, I., et al. Oncol. Rep. 20(5):1029-1033(2008)